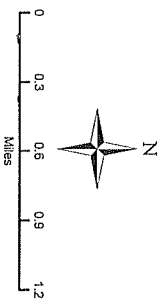


# THORNTON

## Natural Resource Inventory

- Map Features**
- ☐ Thornton Town Line
  - ☐ Other NH Communities
  - 🚂 Railroads
  - 📏 100 Foot Contour Lines
  - ⚡ Major Power Line
  - 🗺 National Forest Boundary
  - 🌳 Stratified Drift Aquifer
  - 🌊 100 Year Flood Zone
  - 🌊 Wetlands
  - 🌳 Conserved Land
  - 🌊 Hydric Soil
- Small Rivers & Streams**
- ~ Small Rivers & Streams
  - 🌊 Major Rivers, Lakes & Ponds
- Thornton Roads**
- 🛣 Interstate Highway
  - 🛣 US Route
  - 🛣 State Road
  - 🛣 Local Road
  - 🛣 National Forest Road
  - 🛣 Private Road



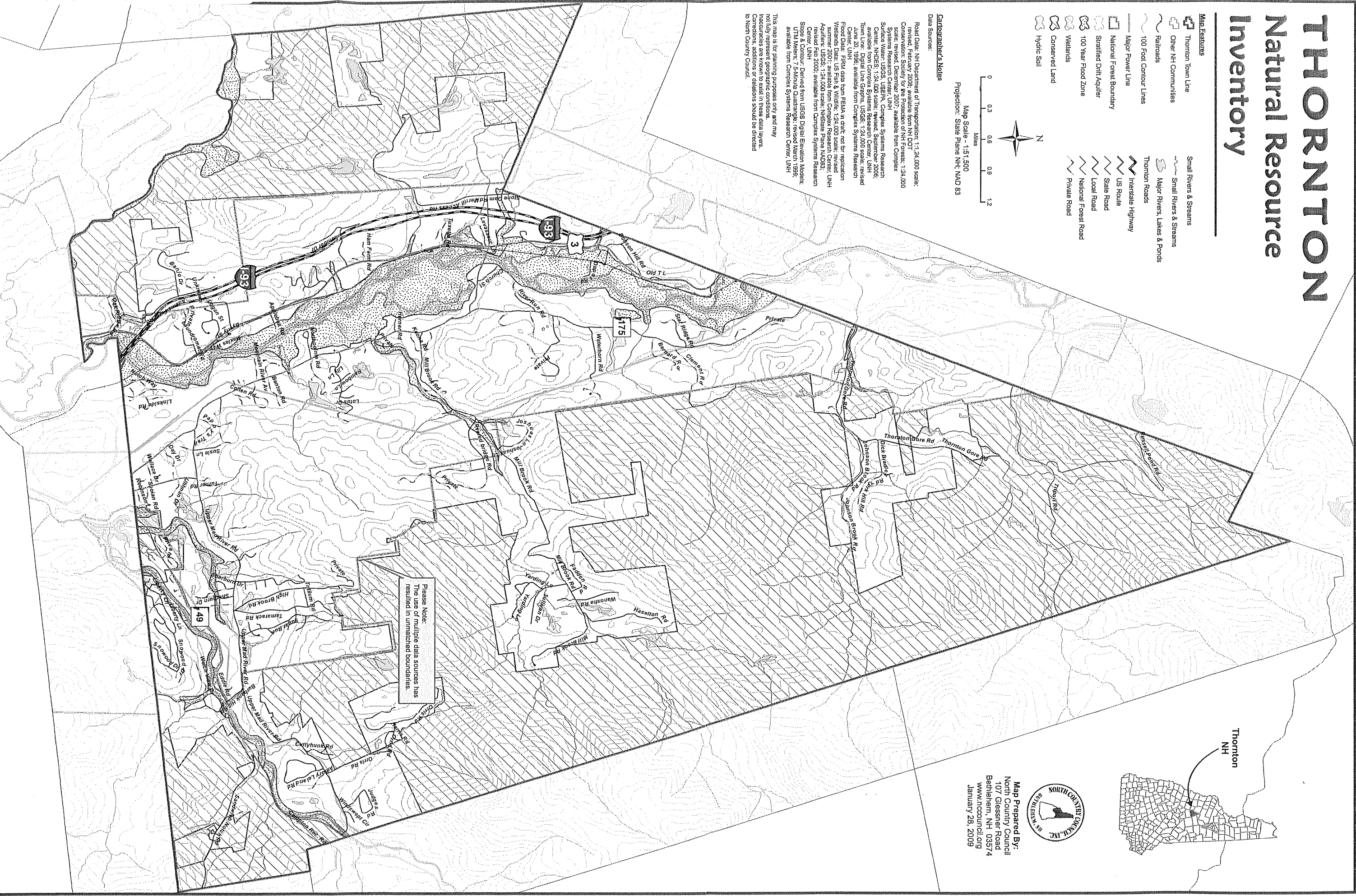
Map Scale - 1:51,500  
 Projection: State Plane NH, NAD 83

**Cartographer's Notes**

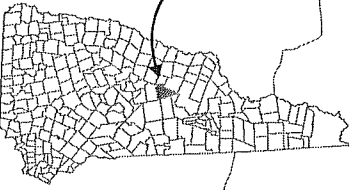
Data Sources:

Road Data: NH Department of Transportation; 1:124,000 scale; revised, February 2008; available from NH DOT  
 Conservation: Society for the Protection of NH Forests; 1:24,000 scale; revised, December 2007; available from Complex Systems Research Center, UNH  
 Stratified Drift Aquifer: USGS; 1:24,000 scale; revised September 2006; available from Complex Systems Research Center, UNH  
 Town Line: Digital Line Graphs, USGS; 1:24,000 scale; revised June 20, 1996; available from Complex Systems Research Center, UNH  
 Flood Data: FIRV data from FEMA in draft; not for replication  
 Wetlands Data: US Fish & Wildlife; 1:24,000 scale; revised February 2000; available from Complex Systems Research Center, UNH  
 Aquifers: USGS; 1:24,000 scale; Hydrologic Plane NAD83; revised Feb 2000; available from Complex Systems Research Center, UNH  
 Slope & Contour: Derived from USGS Digital Elevation Models; UTM Meters; 7.5 Minute Quadrangle; revised March 1999; available from Complex Systems Research Center, UNH

This map is for planning purposes only and may not fully represent geographic conditions. It is not intended for use in legal proceedings. Corrections, additions or deletions should be directed to North Country Council.



Please Note:  
 The use of multiple data sources has resulted in unmatched boundaries.



**Map Prepared By:**  
 North Country Council  
 107 Glassner Road  
 Bethel, NH 03574  
 www.nccouncil.org  
 January 28, 2009



FIGURE 5